

AN20-010

(5.4 ± acres in Prairie Township)

Status: Acceptance Ordinance (Tentative 2nd reading
3/29/2021)

Legislation

2016-2020 Service Ordinance

0670-2021 Acceptance Ordinance

Principal Parties

Petitioners/property owners:

RJM Star LLC

Attorney: Jeffrey Joos & Aaron Eppling

Staff: Marc Rostan (process)

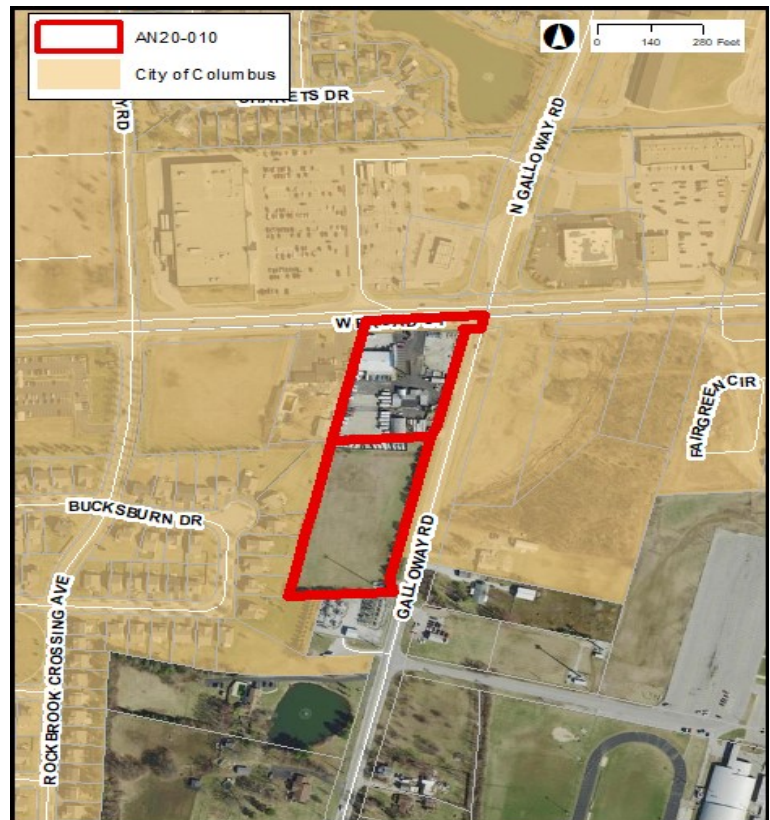
Key Dates

County Petition Date: 9/2/2020

Service Ordinance Approved: 9/14/2020

Approved by Franklin County Commissioners: 10/6/2020

Notice from County Received: 1/11/2021



Site Information

- The 5.4± acre site is an infill-type annexation.
- The current use for the site is commercial, which will remain unchanged upon annexation.
- The site is located within the boundaries of the Westland Area Plan, which recommends Commercial and High Density Residential for the site. This area has early adoption of Columbus Citywide Planning Policies.
- The site is within the boundaries of the Westland Area Commission.
- The site does not require a boundary conformance.

Key Issues

- Annexation is sought to obtain city services.
- Planning staff have conducted a preliminary review and are supportive of the proposed use. It is consistent with the plan recommendation and has the opportunity to generate revenue for the city.
- Annexation does not guarantee a zoning application will be approved. Zoning requests require a separate application process through the Department of Building and Zoning Services.

Legislative Information

- The Ohio Revised Code stipulates that once an annexation has been approved by the county, it must be accepted by the receiving municipality in order for the annexation process to be complete. City acceptance must take place a minimum of 60 days after the Clerk receives notice of County approval. Should action not be taken by the City within 120 days of the first consideration of an acceptance ordinance, the annexation does not take place.