

PROPOSED BOUNDARY ADJUSTMENT OF 3.9± ACRES

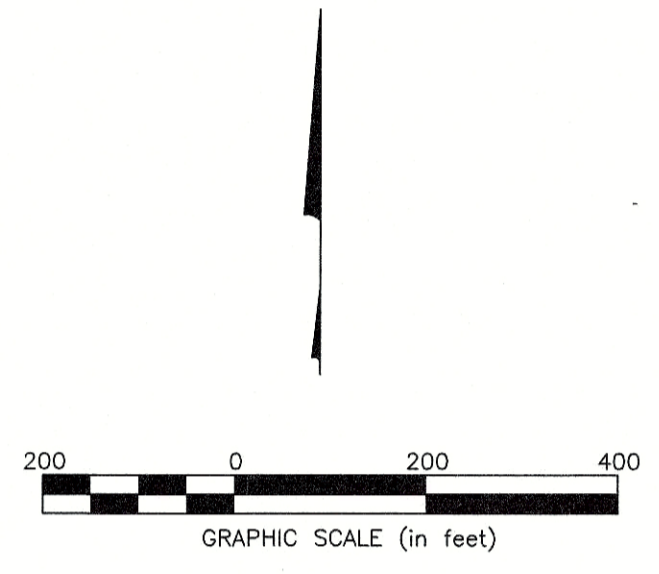
FROM THE CITY OF COLUMBUS TO THE CITY OF REYNOLDSBURG

HALF LOT 40, SECTION 23 & HALF LOT 41, SECTION 24, TOWNSHIP 12, RANGE 21

REFUGEE LANDS

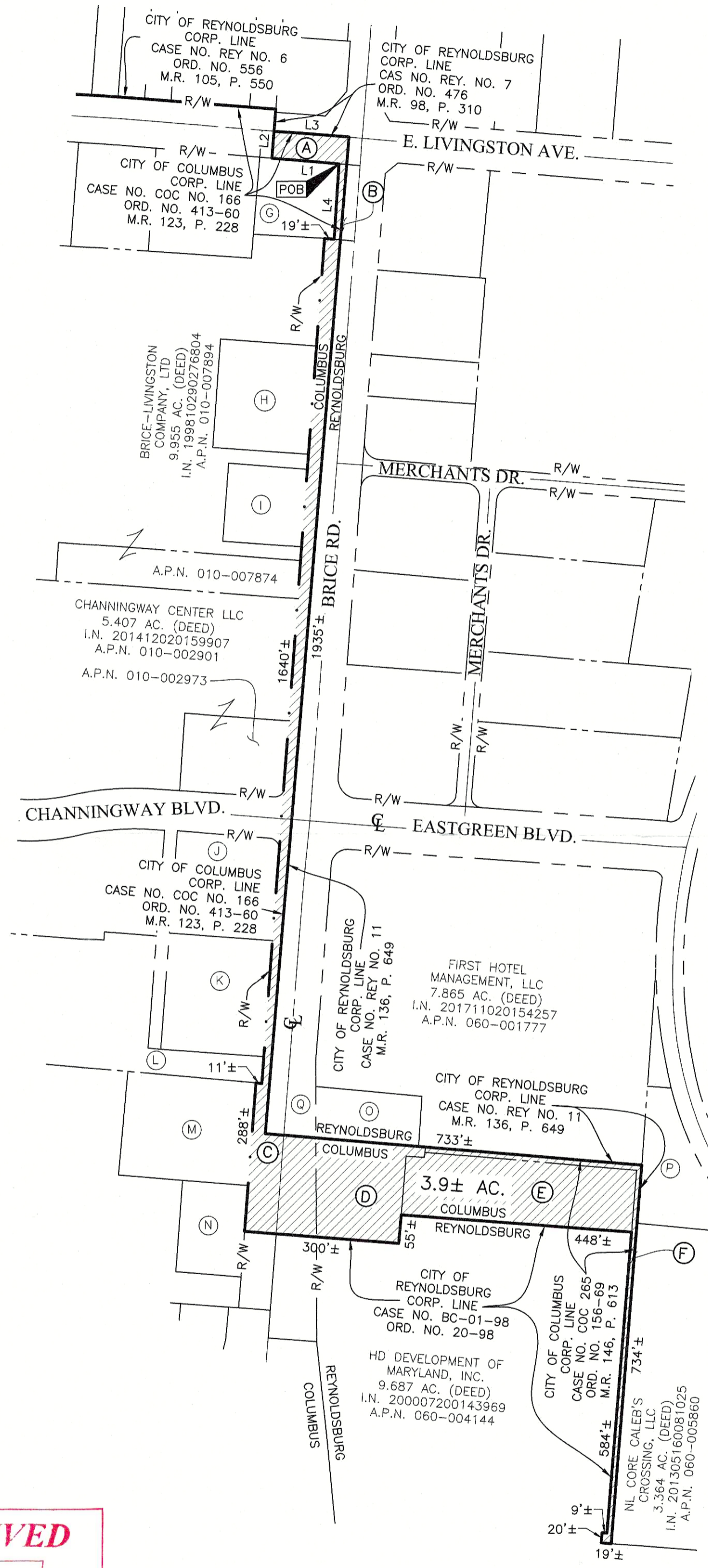
CITY OF COLUMBUS, COUNTY OF FRANKLIN, STATE OF OHIO

**ANNEXATION
PLAT & DESCRIPTION
ACCEPTABLE**
CORNELL R. ROBERTSON, P.E., P.S.
FRANKLIN COUNTY ENGINEER
By *CR* Date 6/28/19



LINE TABLE	
LINE	DISTANCE
L1	130'±
L2	52'±
L3	145'±
L4	146'±

STATE OF OHIO
JOHN C. DODGION
REGISTERED
9-8069
By *John C. Dodgion* Date 06/24/2019
John C. Dodgion
Professional Surveyor No. 8069



- (A) CITY OF COLUMBUS
0.230 AC. (DEED)
D.B. 2851, P. 5
- (B) CITY OF REYNOLDSBURG
0.155 AC. (DEED)
D.B. 3208, P. 452
- (C) THE CITY OF COLUMBUS, OHIO
2.854 AC. (DEED)
D.B. 2968, P. 603
- (D) 2440 BRICE ROAD, LLC
1.080 AC. (DEED)
I.N. 201009160121046
- (E) 2444 BRICE, LLC
1.254 AC. (DEED)
I.N. 201502250023224
- (F) SHELL OIL COMPANY
99-YR LEASE
L.V. 181, P. 112
- (G) ERMO MARKETING COMPANY
0.533 AC. (DEED)
O.R. 13866105
A.P.N. 010-123476
- (H) O'REILLY AUTO ENTERPRISES, LLC
PARCEL E
0.900 AC. (DEED)
I.N. 201405140059647
A.P.N. 010-286104
- (I) BURGER KING CORPORATION
0.5165 AC. (DEED)
O.R. 14247E09
A.P.N. 010-007495
- (J) THE CITY NATIONAL BANK & TRUST CO.
0.912 AC. (DEED)
D.B. 3193, P. 528
A.P.N. 010-002976
- (K) PULIDO, LLC
TRACT I (DEED)
I.N. 201812140169616
A.P.N. 010-011825
- (L) DREAM LAND HOTELS, LLC
1.907 AC. (DEED)
I.N. 200606140115747
A.P.N. 010-199995
- (M) SOK COMPANY LLC
1.148 AC. (DEED)
I.N. 200512090260532
A.P.N. 010-011165
- (N) TIM DONUT U.S. LIMITED INC.
I.N. 199810020251997
010-006289
- (O) WAFFLE HOUSE, INC.
0.466 AC. (DEED)
O.R. 25496E06
A.P.N. 060-008060
- (P) KILIANA AMPARBENG AND KWEISI SETH AMPARBENG
0.738 AC. (DEED)
I.N. 201803120032560
A.P.N. 060-002393
- (Q) THE CITY OF REYNOLDSBURG, OHIO
1.621 AC. (DEED)
D.B. 3035, P. 694

RECEIVED
JUN 28 2019
Franklin County Engineer
Cornell R. Robertson, P.E., P.S.

AREA TO BE ANNEXED
FROM THE CITY OF COLUMBUS TO THE CITY OF REYNOLDSBURG

PROPOSED CITY OF REYNOLDSBURG CORPORATION LINE
EXISTING CITY OF REYNOLDSBURG CORPORATION LINE

Contiguity Note:
Total perimeter of annexation area is 7272 feet, of which 4923 feet is contiguous with the City of Reynoldsburg by Ordinance Numbers 20-98 and 476 and Case No. Rey No. 11, giving 67% perimeter contiguity.

Note:
This annexation does not create islands of unincorporated areas within the limits of the area to be annexed.



Date: June 14, 2019
Scale: 1" = 200'
Job No: 2019-0016
Sheet: 1 of 1

REVISIONS		
MARK	DATE	DESCRIPTION